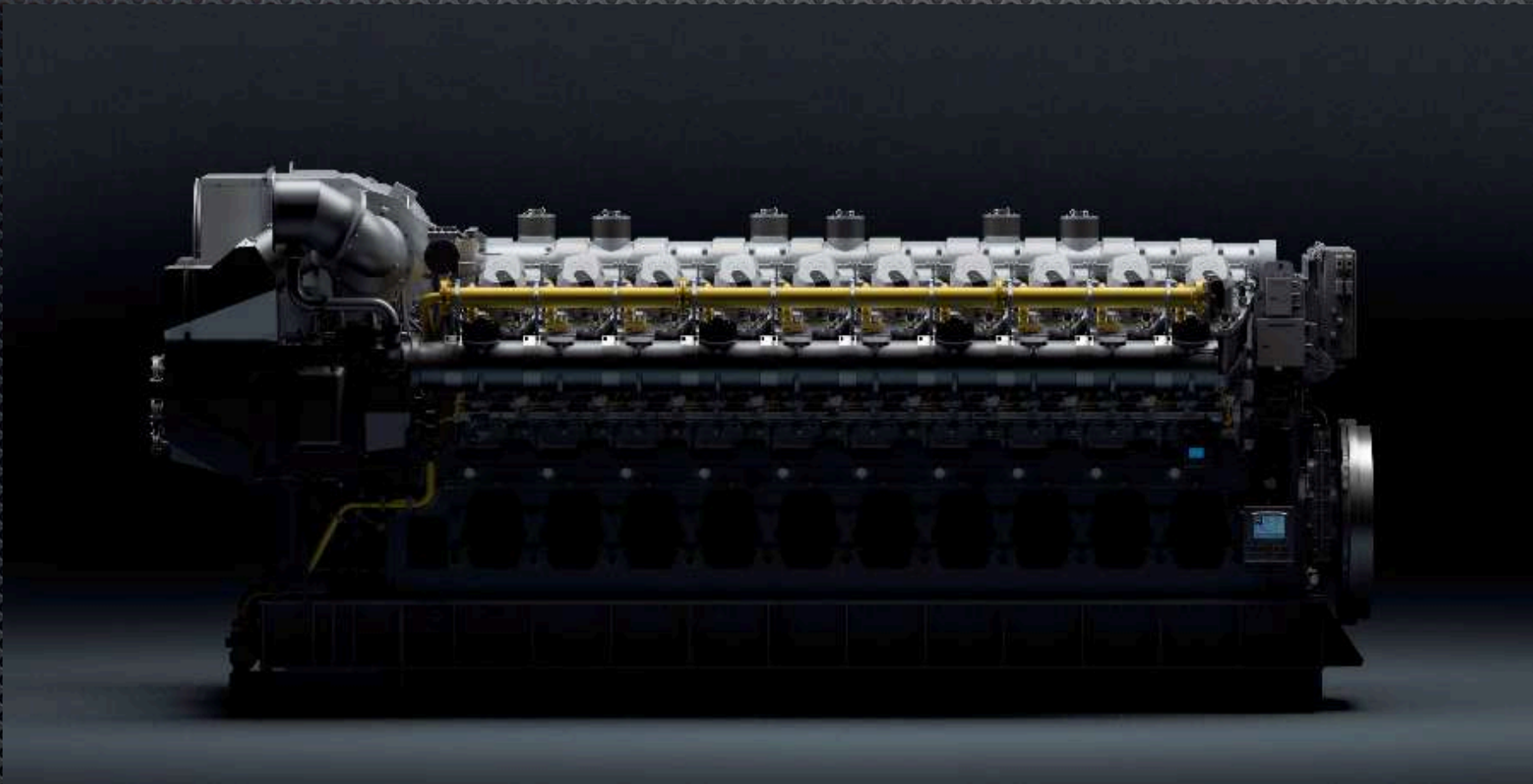
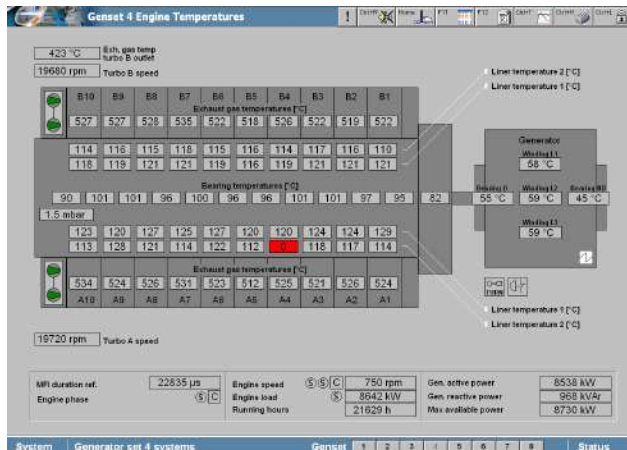


Consulting, technical solutions for energy and engineering



EVE International AS



Welcome to EVE International AS

EVE International AS was founded to provide first class services for diesel engines used in Marine and Energy applications.

Our engineering background ensures successful sourcing of the most services from all over the world.

With our experienced and improved engineer team, we carry out service, planned maintenance and supervising.

Our extensive technical knowledge and the experience of our educated personel are all factors that will guarantee your business top quality solutions.

Credibility, reliability and professionalism make up the basis of our relationship with business partners.

Our team of engineers and technicians are able to travel at short notice to any location to carry out overhauls, repairs and reconditioning of a wide range of marine, plant and industrial engines.

ALL MAJOR OVERHAULS FOR Your Plant'S

EVE are specialists in finding solutions at specific and faulty systems.



Engineering and technical consulting

Repair and maintenance service for 2 & 4 stroke diesel & gas engines.

Recondition of selected parts of main auxiliary engines

Service for control and injection systems

One workshop with optimal equipments

24 hours service

(24 hrs service, world wide, also during sea voyage)



We can support with all 2&4 stroke engine types,

At EVE every detail is important because we want to be sure that you receive all service in perfect condition, according to the highest quality standards.

Our strategy is based on long-standing partnerships with leading manufacturers so we can guarantee consistent quality. All departments at EVE INTERNATIONAL AS work closely together to give your company the best possible service.

We can also offer high qualified technical support and repair for your installations.

EVE INTERNATIONAL AS can arrange technical assistance worldwide within a short period of time.

- Customer Centricity
- Commitment to Quality
- Entrepreneurship
- Ethics & Integrity
- Honoring of Commitments
- Humility
- Passion for Learning
- Proactive & Innovative Thinking
- Respect for Individuals
- Responsibility & Accountability
- Socially & Environmentally Responsive
- Speed

Remanufacturing Services

Crankshaft

- *Crankshaft Grinding
- *Crankpin and Main Journal Grinding In-situ
- *Crankshaft Runout Measurement - Crankshaft Straightening
- *Annealing (Softening) of Over Hardened Crankshafts
- *NDT Magnetic Particle Crack Test - Hardness Test Polishing & Superfinishing

Bedplate And Engine Block

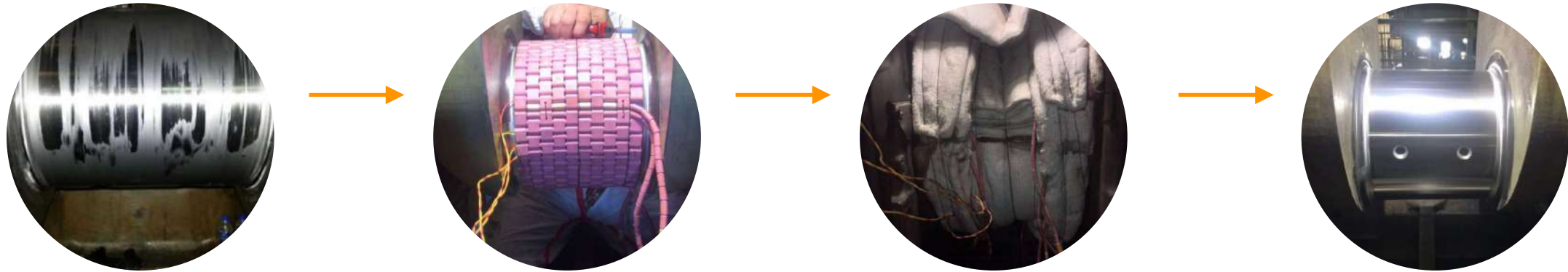
- *In Line Boring of Main Journal Pockets (in-situ) *Optical Alignment Control of Main Bearing Pockets
- *Grinding of Liner Contact Surfaces On Engine Block
- *Welding and Metal-lock of Damaged Parts

Cylinder Liners

- *Internal Honing
- *Machining of Raw Liners
- *Machining of Collar Faces

Performance matters. That's why 90% of large engine customers who demand the highest level of performance and service rely on EVE International AS

By exceeding customer expectations, we've become provider of services for large combustion engines in ships, locomotives, and power - generation plants around the world.



Crankshaft Annealing:

Excessive hardness in damaged crankshaft journals can be reduced to OEM hardness values by annealing (heat treatment). Heat treatment is helpful to minimize the amount of grinding as well.

Cylinder Heads

- *Valve Grinding
- *Valve Reconditioning
- *Seat Grinding
- *Seat Manufacturing From Original Material
- *Seat Installation and Uninstallation
- *Valve Guide Manufacturing
- *Pressurized Hot Water Test
- *Surface Grinding

Connecting Rods

- *Connecting Rod Reconditioning
- *Boring of Bearing Pockets
- *Boring of Small End Bushes
- *Manufacturing of Small End Bushes
- *Machining of Serrated Contract Surfaces of Connecting Rod

Bedplate And Engine Block

- *In Line Boring of Main Journal Pockets (in-situ)
- *Optical Alignment Control of Main Bearing Pockets
- *Grinding of Liner Contact Surfaces On Engine Block
- *Welding and Metallock of Damaged Parts

**24 hours service
world wide**

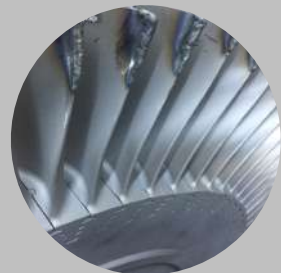
Turbocharger Maintenance & Remanufacturing



TAKING INTO CONSIDERATION THE TECHNICAL COMPLIANCE OF THE AVAILABLE ALTERNATIVES WITH THE MAIN/AUXILIARY ENGINE IN THEORY (THE TURBOCHARGER APPLICATION RANGE: COMPRESSOR PRESSURE RATIO/COMPRESSOR VOLUME FLOW),



AUPON THE CLIENT'S DEMAND, TURBOEVE CAN HANDLE RETROFITTING FEASIBILITY STUDIES OF TURBOCHARGERS



ALL THE PARTS OF A TURBOCHARGER, AFTER CAREFUL TECHNICAL CHECK, IT IS SAFE AND ALLOWED BY THE MANUFACTURERS TO BE RECONDITIONED, AND TURBOEVE ALWAYS RECOMMENDS IT TO ITS CLIENTS AS A COST SAVING SOLUTION.

Turbocharger overhaul/ repairing/routine inspection & maintenance/ improvement of performance or reliability

Rotor complete disassembly & assembly & repair

Dynamic balancing on our computerized Schenk

Totally controlled and enclosed 'clean room' for reblasting of turbine rotor shafts.

Hydropressure blasting for cleaning of turbocharger components. Spray remetalling of worn rotor shaft.



Optical Alignment and Surface Flatness Measurement



Nozzle ring/Cover ring/Bearing/ Sealing bush/Gear oil pump/Gas inlet casing/Gas outlet casing/Air inlet casing/Air outlet casing etc. disassembly & assembly & renewal.

24 hours service
(24 hrs service, world wide, also during sea voyage)



Consulting, technical solutions for energy and engineering

EVE International AS